

Oakland Unified School District Dual Enrollment Data



OAKLAND UNIFIED
SCHOOL DISTRICT

Community Schools, Thriving Students

Leslie Hsu
Manager, Dual Enrollment (OUSD)
&
Fatima Ghatala
Specialist, Dual Enrollment (OUSD)

In partnership with:





OAKLAND UNIFIED
SCHOOL DISTRICT
Community Schools, Thriving Students

Dual Enrollment Participation Rates: OUSD vs State/National Averages

- Oakland is higher than the State and National average of students participating in community college courses
- This does not factor in Concurrent Enrolled students (students who enroll on their own) *so our rates are higher*

| Academic Year | Student Count | Enrolled in 1 or more DE Course | % DE Students |
|---------------|---------------|---------------------------------|---------------|
| 2016-17 | 2048 | 531 | 26% |
| 2017-18 | 2142 | 848 | 40% |
| 2018-19 | 2313 | 879 | 38% |

Compared to...

12.6% of **California** high schoolers take community college courses

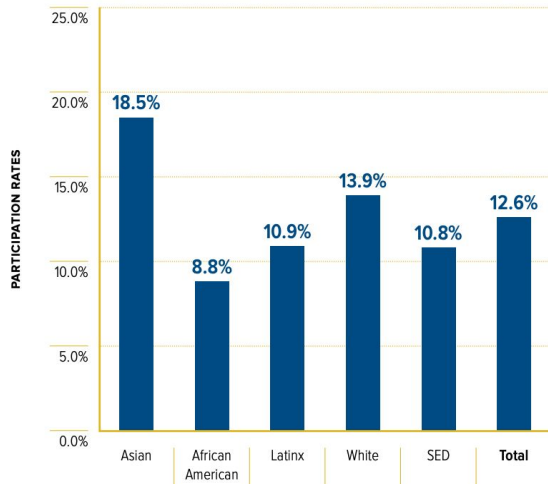
11% of high schoolers take community college courses **nationally**



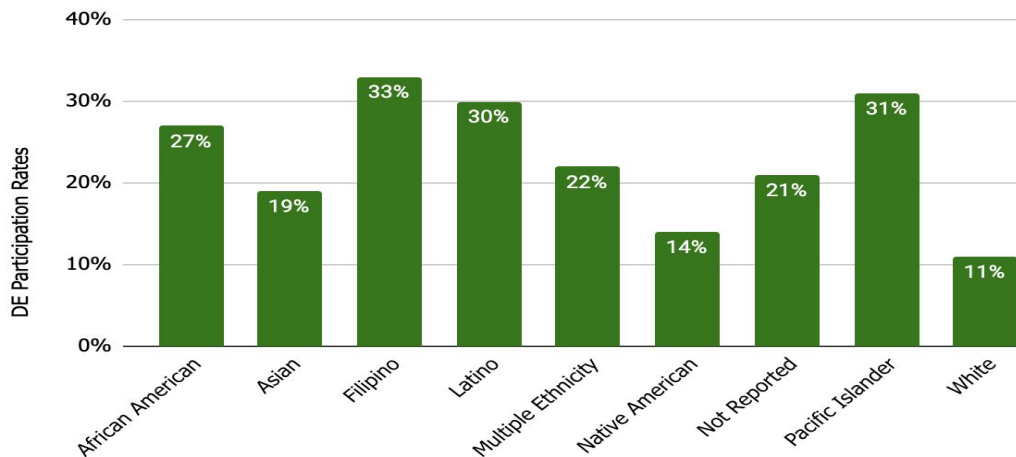
OAKLAND UNIFIED
SCHOOL DISTRICT
Community Schools, Thriving Students

Dual Enrollment Course Participation by Race/Ethnicity

2016-17 California Data



2016-17 OUSD Data



Oakland is significantly higher than the State
for AfAm and Latx students participating in community college courses.

- CA: 8.8% Af Am and 10.9% Latx
- OUSD: 27% Af Am and 30% Latx



OAKLAND UNIFIED
SCHOOL DISTRICT
Community Schools, Thriving Students

Total Dual Enrollment Courses by Dept

(Fall 2015-Fall 2019)

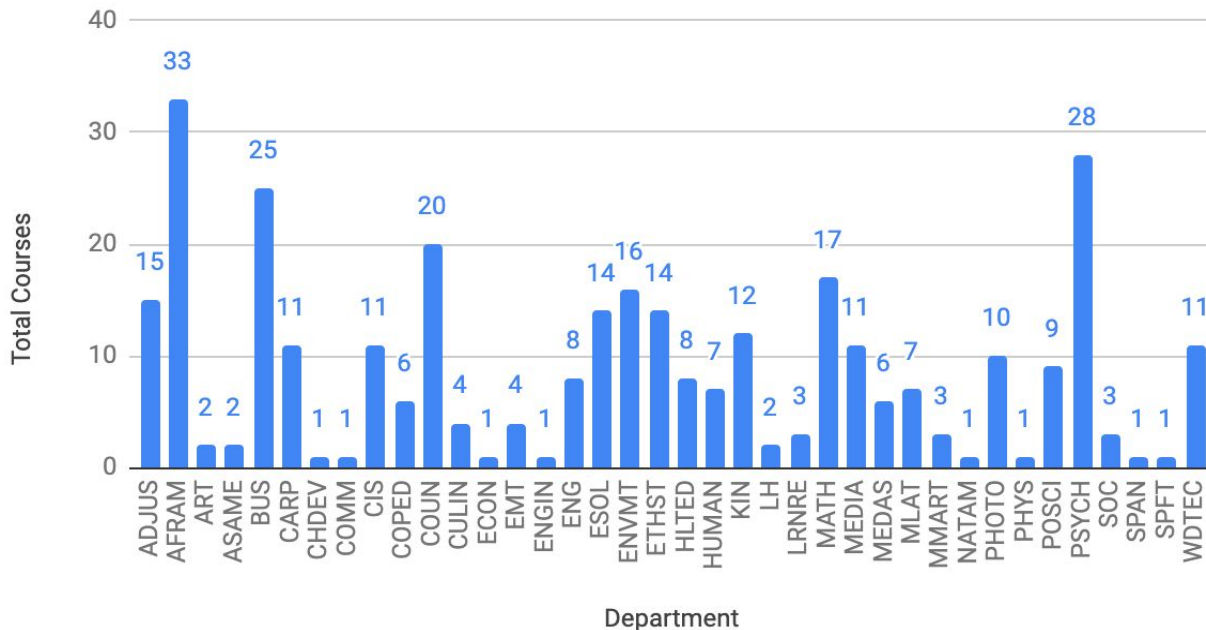
Top Depts:

1. AFRAM (33)
2. PSYCH (28)
3. BUS (25)
4. ETHST + MLAT +
ASAME + NATAM (24)
5. COUN (20)
6. ENVMT + LH (18)
7. MATH (17)
8. ADJUS (15)
9. ESOL (14)

<3 courses:

1. ART
2. CHDEV
3. COMM
4. ECON
5. ENGIN
6. PHYS
7. SPAN

Total DE Courses by Dept (Fall 2015-Fall 2019)



**Please contact us for more info
or questions!**

Leslie Hsu Freeman:
leslie.hsu@ousd.org

Fatima Ghatala:
fatima.ghatala@ousd.org